

## Map Series Four

Town of Duck

Shoreline Change  
Scenario Two

Structure

Pool

### Medium Erosion

— 2010 First Line of Stable Natural Vegetation

— CAMA Setback Factor Scenario 10yr

— CAMA Setback Factor Scenario 20yr

— CAMA Setback Factor Scenario 30yr

\*Town staff used the erosion setback factor established by the North Carolina Division of Coastal Management to project 10, 20, and 30 year erosion patterns for this scenario. The colored lines west of the FLSNV indicate the projected location of the FLSNV for each time interval. In most cases, the erosion setback factor is two feet per year throughout Duck except for portions of the Sanderling subdivision which have a factor of three feet per year.

Page 1 of 6

1 inch = 400 feet

Imagery - 2007 Dare County Digital Orthophotos





\*Town staff used the erosion setback factor established by the North Carolina Division of Coastal Management to project 10, 20, and 30 year erosion patterns for this scenario. The colored lines west of the FLSNV indicate the projected location of the FLSNV for each time interval. In most cases, the erosion setback factor is two feet per year throughout Duck except for portions of the Sanderling subdivision which have a factor of three feet per year.

Page 1 of 6

1 inch = 400 feet

Imagery - 2007 Dare County Digital Orthophotos





## Map Series Four

Town of Duck

Shoreline Change  
Scenario Two

### Medium Erosion

— 2010 First Line of Stable Natural Vegetation

— CAMA Setback Factor Scenario 10yr

— CAMA Setback Factor Scenario 20yr

— CAMA Setback Factor Scenario 30yr

\*Town staff used the erosion setback factor established by the North Carolina Division of Coastal Management to project 10, 20, and 30 year erosion patterns for this scenario. The colored lines west of the FLSNV indicate the projected location of the FLSNV for each time interval. In most cases, the erosion setback factor is two feet per year throughout Duck except for portions of the Sanderling subdivision which have a factor of three feet per year.

Page 2 of 6

1 inch = 400 feet

Imagery - 2007 Dare County Digital Orthophotos





\*Town staff used the erosion setback factor established by the North Carolina Division of Coastal Management to project 10, 20, and 30 year erosion patterns for this scenario. The colored lines west of the FLSNV indicate the projected location of the FLSNV for each time interval. In most cases, the erosion setback factor is two feet per year throughout Duck except for portions of the Sanderling subdivision which have a factor of three feet per year.

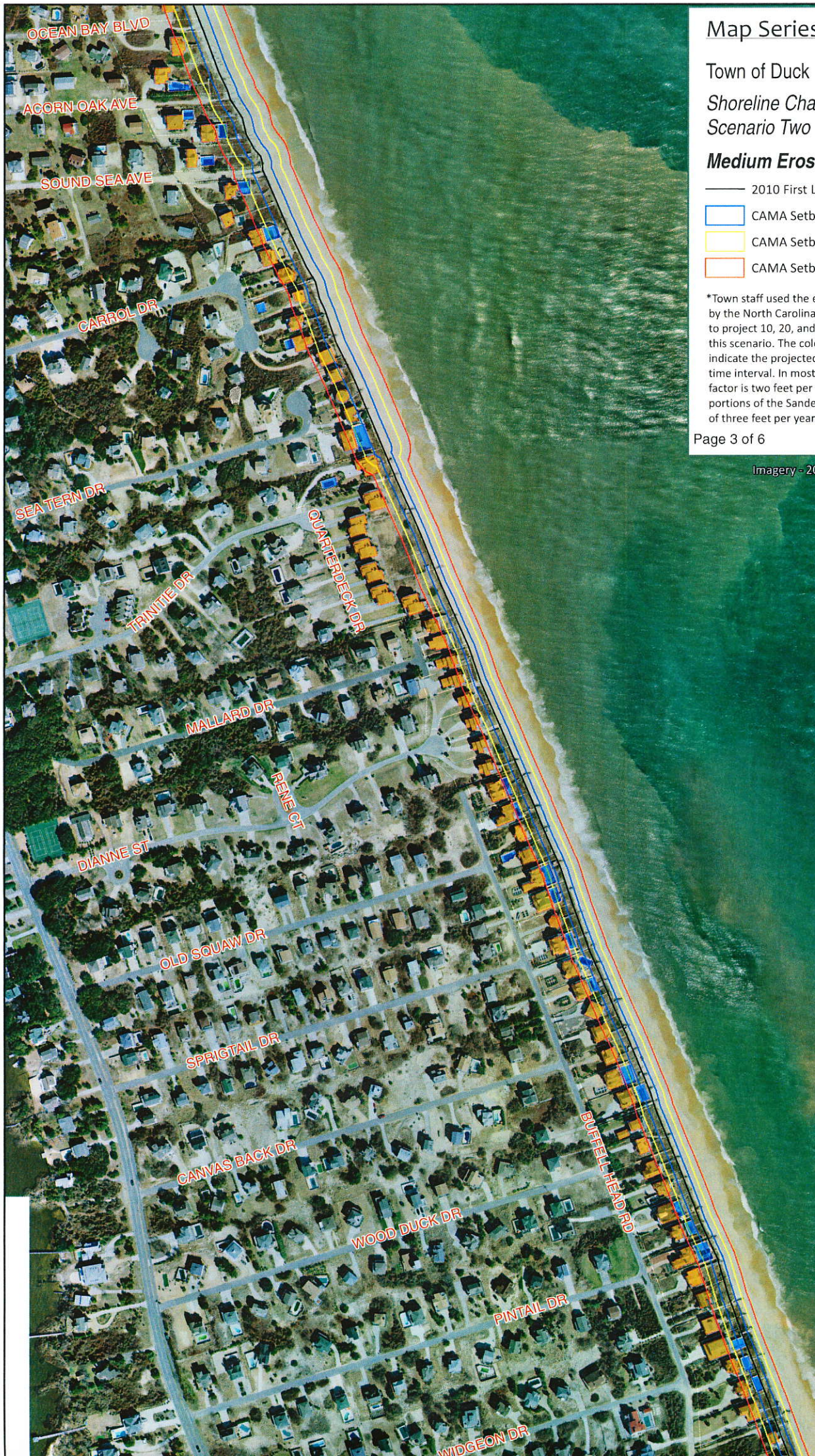
Page 2 of 6

1 inch = 400 feet

Imagery - 2007 Dare County Digital Orthophotos







## Map Series Four

Town of Duck

Shoreline Change  
Scenario Two

### Medium Erosion

— 2010 First Line of Stable Natural Vegetation

— CAMA Setback Factor Scenario 10yr

— CAMA Setback Factor Scenario 20yr

— CAMA Setback Factor Scenario 30yr

\*Town staff used the erosion setback factor established by the North Carolina Division of Coastal Management to project 10, 20, and 30 year erosion patterns for this scenario. The colored lines west of the FLSNV indicate the projected location of the FLSNV for each time interval. In most cases, the erosion setback factor is two feet per year throughout Duck except for portions of the Sanderling subdivision which have a factor of three feet per year.

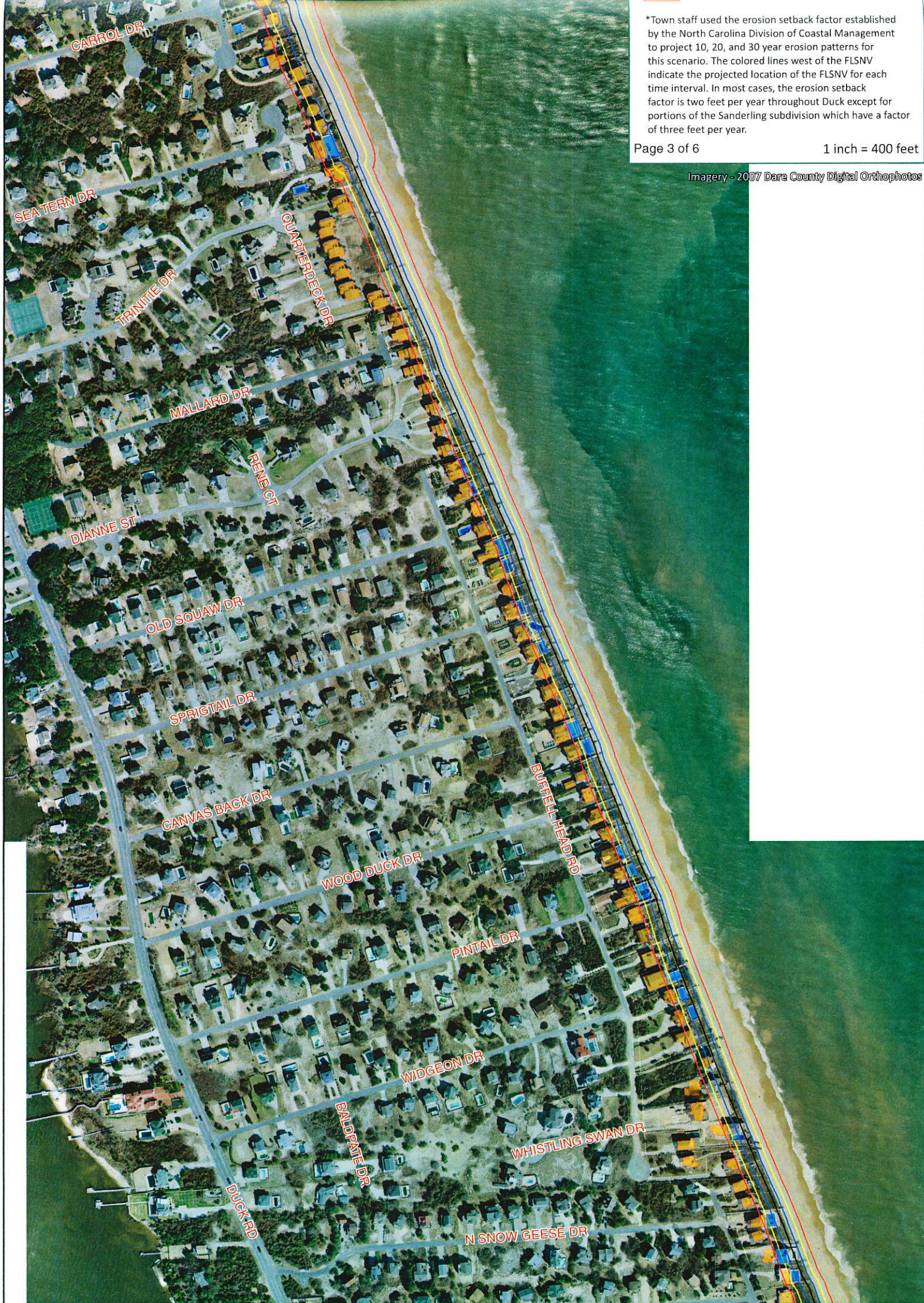
Page 3 of 6

1 inch = 400 feet

Imagery - 2007 Dare County Digital Orthophotos



\*Town staff used the erosion setback factor established by the North Carolina Division of Coastal Management to project 10, 20, and 30 year erosion patterns for this scenario. The colored lines west of the FLSNV indicate the projected location of the FLSNV for each time interval. In most cases, the erosion setback factor is two feet per year throughout Duck except for portions of the Sanderling subdivision which have a factor of three feet per year.





## Map Series Four

Town of Duck

Shoreline Change  
Scenario Two

### Medium Erosion

— 2010 First Line of Stable Natural Vegetation

 CAMA Setback Factor Scenario 10yr

 CAMA Setback Factor Scenario 20yr

 CAMA Setback Factor Scenario 30yr

\*Town staff used the erosion setback factor established by the North Carolina Division of Coastal Management to project 10, 20, and 30 year erosion patterns for this scenario. The colored lines west of the FLSNV indicate the projected location of the FLSNV for each time interval. In most cases, the erosion setback factor is two feet per year throughout Duck except for portions of the Sanderling subdivision which have a factor of three feet per year.

Page 4 of 6

1 inch = 400 feet

Imagery - 2007 Dare County Digital Orthophotos





\*Town staff used the erosion setback factor established by the North Carolina Division of Coastal Management to project 10, 20, and 30 year erosion patterns for this scenario. The colored lines west of the FLSNV indicate the projected location of the FLSNV for each time interval. In most cases, the erosion setback factor is two feet per year throughout Duck except for portions of the Sanderling subdivision which have a factor of three feet per year.

Page 4 of 6

1 inch = 400 feet

Imagery - 2007 Dare County Digital Orthophotos







## Map Series Four

Town of Duck

Shoreline Change  
Scenario Two

Structure

Pool

### Medium Erosion

— 2010 First Line of Stable Natural Vegetation

— CAMA Setback Factor Scenario 10yr

— CAMA Setback Factor Scenario 20yr

— CAMA Setback Factor Scenario 30yr

\*Town staff used the erosion setback factor established by the North Carolina Division of Coastal Management to project 10, 20, and 30 year erosion patterns for this scenario. The colored lines west of the FLSNV indicate the projected location of the FLSNV for each time interval. In most cases, the erosion setback factor is two feet per year throughout Duck except for portions of the Sanderling subdivision which have a factor of three feet per year.

Page 5 of 6

1 inch = 400 feet

Imagery - 2007 Dare County Digital Orthophotos



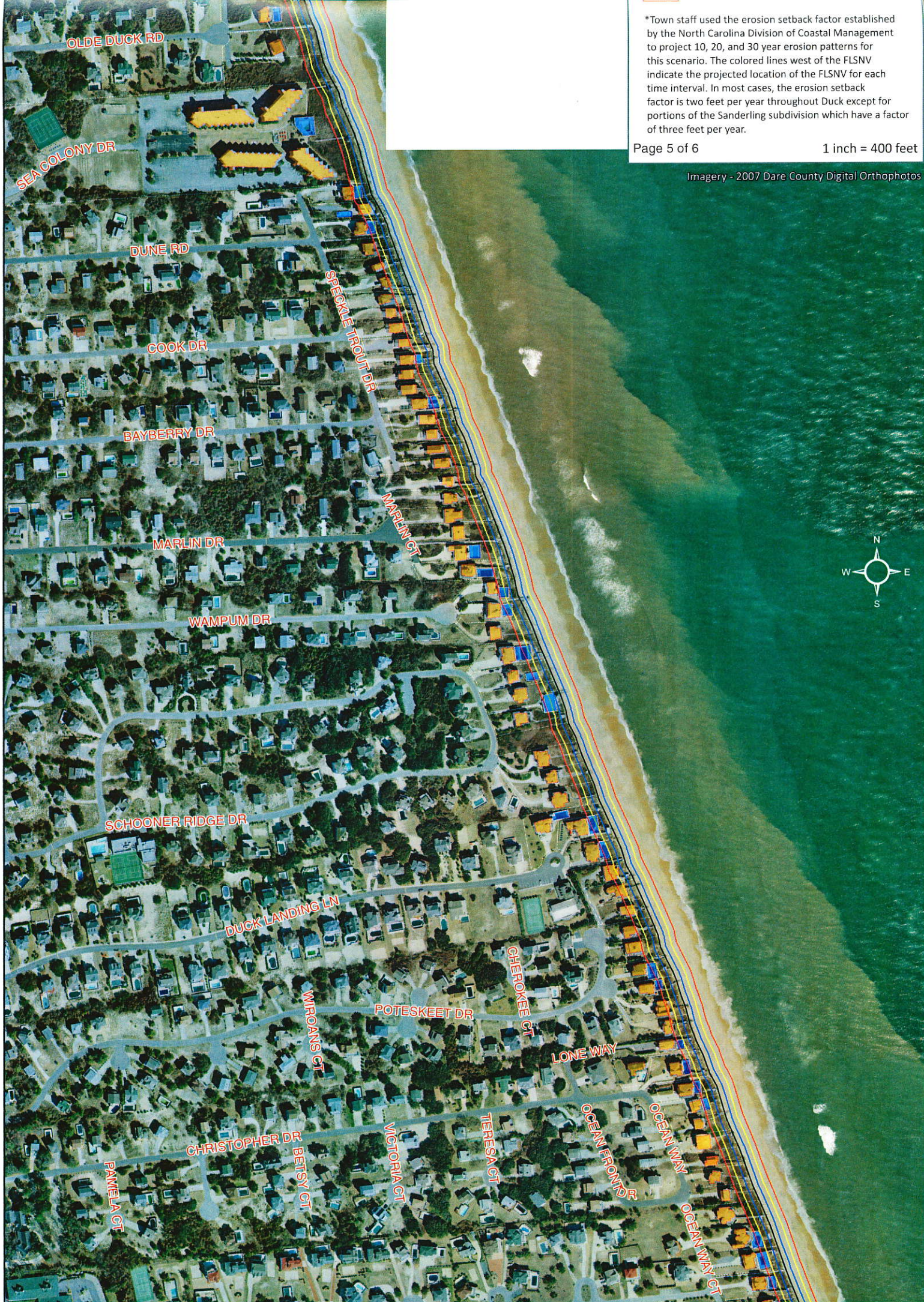


\*Town staff used the erosion setback factor established by the North Carolina Division of Coastal Management to project 10, 20, and 30 year erosion patterns for this scenario. The colored lines west of the FLSNV indicate the projected location of the FLSNV for each time interval. In most cases, the erosion setback factor is two feet per year throughout Duck except for portions of the Sanderling subdivision which have a factor of three feet per year.

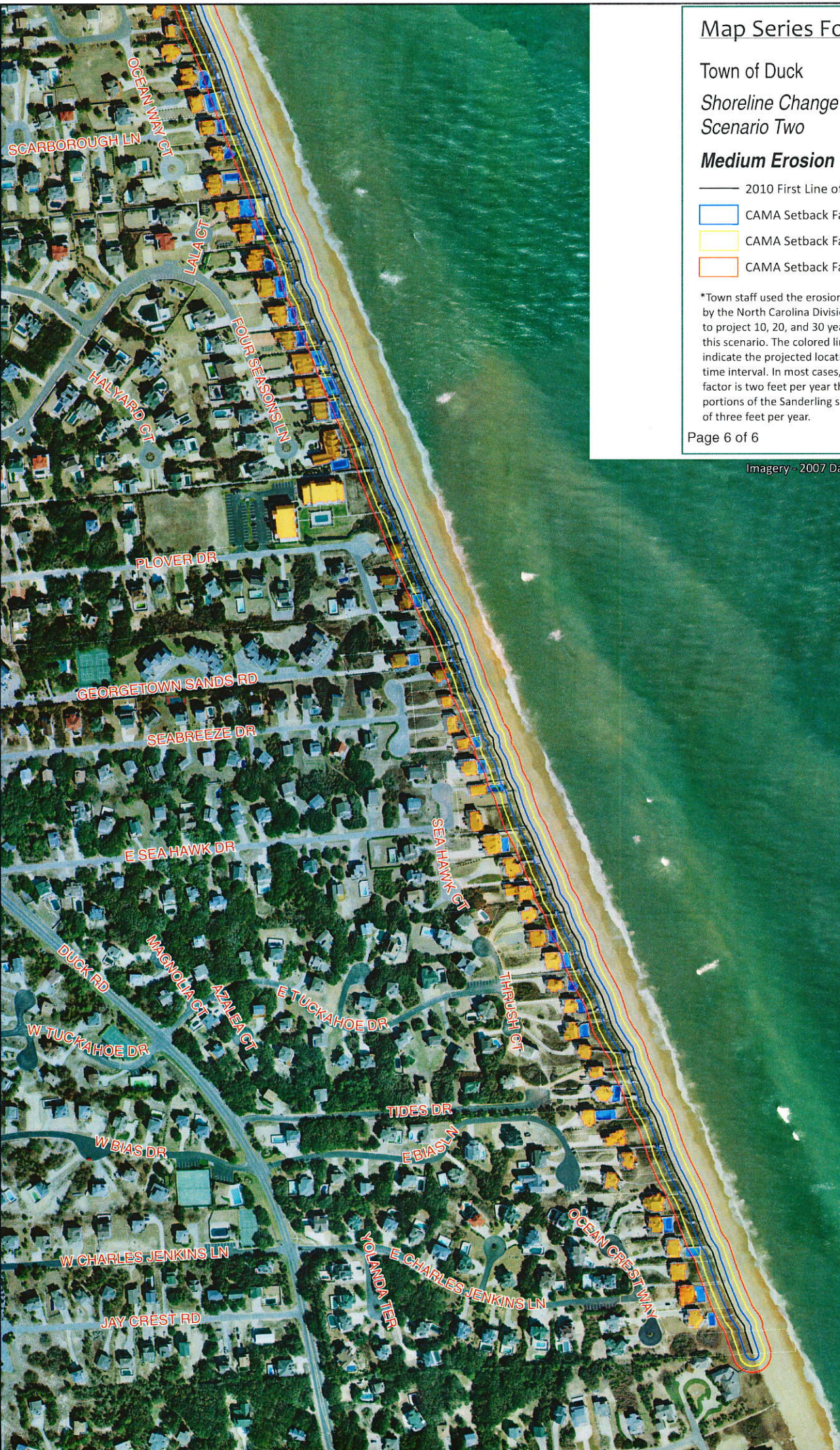
Page 5 of 6

1 inch = 400 feet

Imagery - 2007 Dare County Digital Orthophotos







## Map Series Four

Town of Duck

Shoreline Change  
Scenario Two

Structure  
Pool

### Medium Erosion

— 2010 First Line of Stable Natural Vegetation

— CAMA Setback Factor Scenario 10yr

— CAMA Setback Factor Scenario 20yr

— CAMA Setback Factor Scenario 30yr

\*Town staff used the erosion setback factor established by the North Carolina Division of Coastal Management to project 10, 20, and 30 year erosion patterns for this scenario. The colored lines west of the FLSNV indicate the projected location of the FLSNV for each time interval. In most cases, the erosion setback factor is two feet per year throughout Duck except for portions of the Sanderling subdivision which have a factor of three feet per year.

Page 6 of 6

1 inch = 400 feet

Imagery - 2007 Dare County Digital Orthophotos





\*Town staff used the erosion setback factor established by the North Carolina Division of Coastal Management to project 10, 20, and 30 year erosion patterns for this scenario. The colored lines west of the FLSNV indicate the projected location of the FLSNV for each time interval. In most cases, the erosion setback factor is two feet per year throughout Duck except for portions of the Sanderling subdivision which have a factor of three feet per year.

Page 6 of 6

1 inch = 400 feet

Imagery - 2007 Dare County Digital Orthophotos

